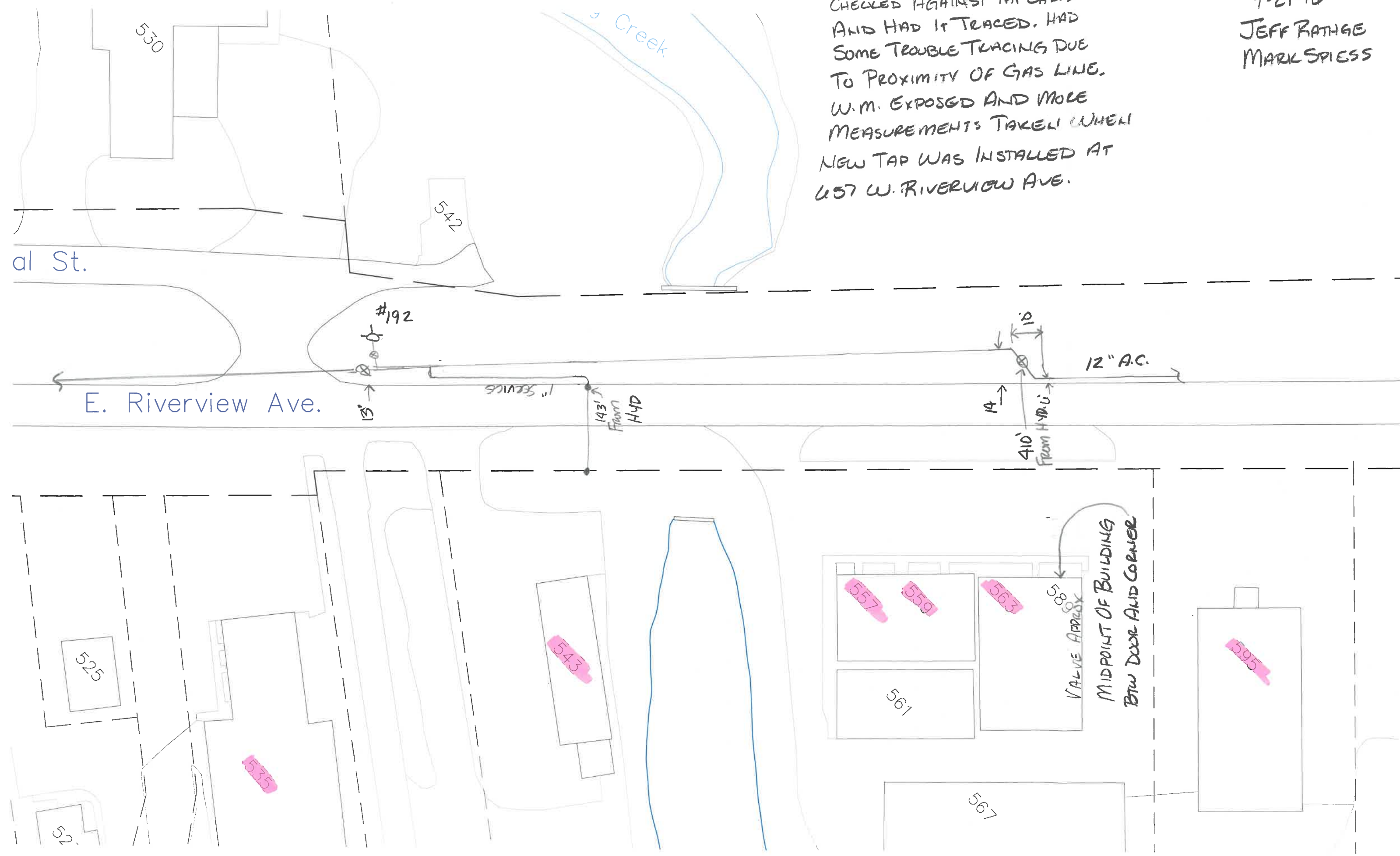


9-21-10
JEFF RATHGE
MARK SPIESS

CHECKED AGAINST TAP CARDS
AND HAD IT TRACED. HAD
SOME TROUBLE TRACING DUE
TO PROXIMITY OF GAS LINE.
W.M. EXPOSED AND MOLE
MEASUREMENTS TAKEN WHEN
NEW TAP WAS INSTALLED AT
457 W. RIVERVIEW AVE.



E. Riverview Ave.

12" A.C.

MIDPOINT OF BUILDING
Btw DOOR AND CORNER

VALVE APPROX